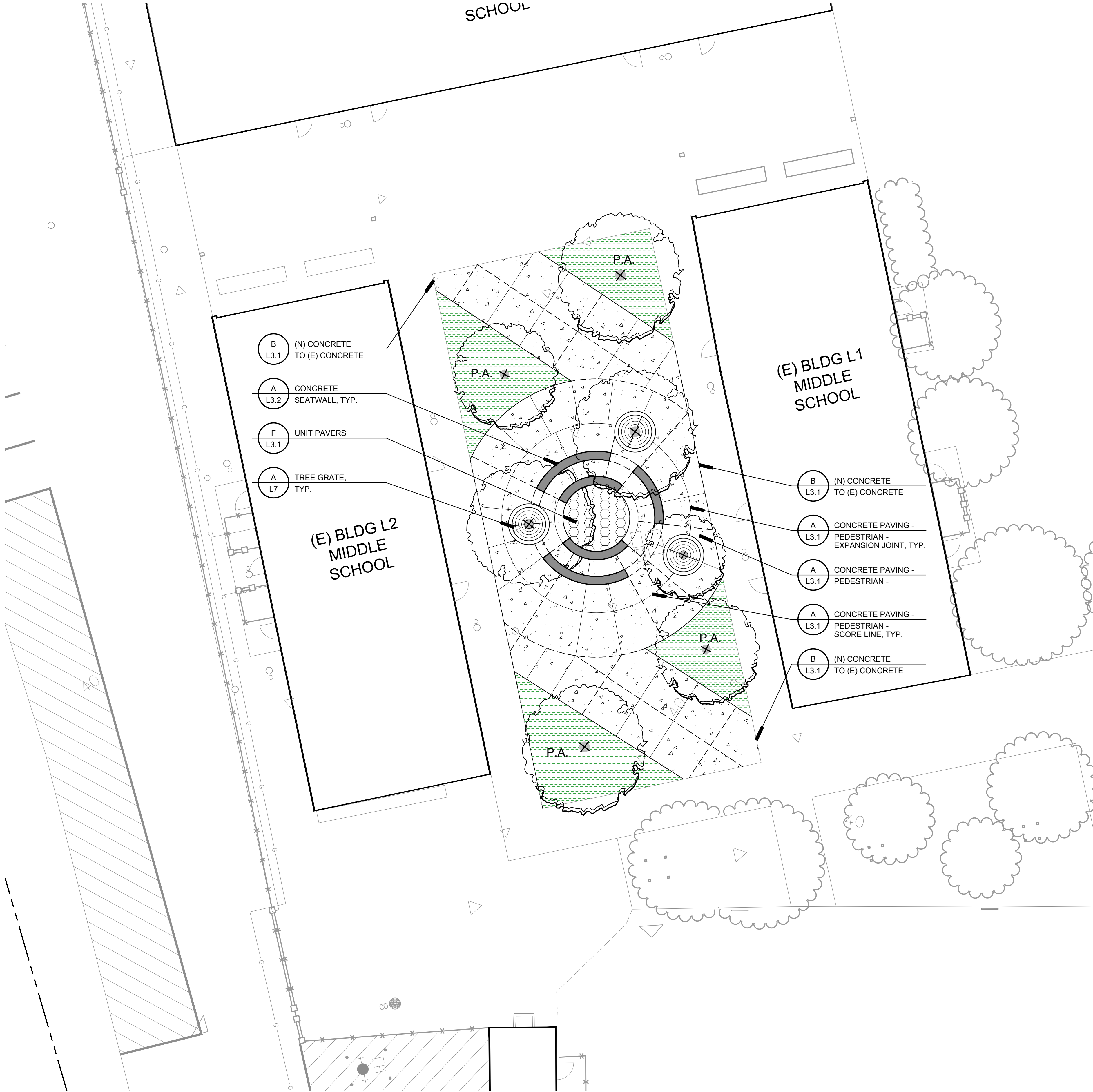


MATERIAL & DETAIL REFERENCE NOTES

- THESE NOTES ARE FOR GENERAL REFERENCE IN CONJUNCTION WITH AND AS A SUPPLEMENT TO THE WRITTEN SPECIFICATIONS, DETAILS, ADDENDA AND CHANGE ORDERS ASSOCIATED WITH THE CONTRACT DOCUMENTS.
- CONTRACTOR SHALL BECOME FAMILIAR WITH THE LOCATION OF EXISTING AND PROPOSED UNDERGROUND SERVICES. CONTACT UNDERGROUND SERVICE ALERT (USA) AT (800) 642-2444 PRIOR TO BEGINNING WORK. CONTACT DISTRICT REPRESENTATIVE SHOULD ANY CONFLICTS ARISE.
- SCORE AND EXPANSION JOINTS SHALL BE LOCATED AS INDICATED ON THIS PLAN. CONTRACTOR SHALL MAKE MINOR ADJUSTMENTS WHEN NECESSARY TO ALIGN SCORE AND EXPANSION JOINTS WITH RELATIVE ELEMENTS AS SHOWN ON THE PLAN.
- DETAIL CALLOUTS ON PLAN ARE PROVIDED FOR CONVENIENCE AND GENERAL REFERENCE ONLY. CONTRACTOR SHALL PROVIDE QUANTITY OF PRODUCTS, ELEMENTS AND MATERIALS AS SYMBOLIZED ON PLANS, ASSOCIATED DETAILS AND SPECIFICATIONS.
- FOR EACH CONCRETE FINISH SPECIFIED, CONTRACTOR SHALL POUR A 2'x2' SAMPLE FOR APPROVAL BY DISTRICT REPRESENTATIVE PRIOR TO INSTALLING CONCRETE PAVING.
- LANDSCAPE ARCHITECT IS NOT RESPONSIBLE FOR MEANS AND METHODS OF CONSTRUCTION. IF WORK WITHIN THIS SCOPE REQUIRES REMOVAL, RENOVATION, OR DEMOLITION OF EXISTING TO REMAIN ELEMENTS, BOTH SURFACE AND KNOWN SUBSURFACE CONDITIONS, CONTRACTOR SHALL INCLUDE IN THE BID SUFFICIENT LABOR AND MATERIALS TO RESTORE EXISTING TO REMAIN IMPROVEMENTS IN-KIND AND AS ACCEPTABLE TO DISTRICT REPRESENTATIVE.
- CONTRACTOR SHALL COORDINATE ROUGH GRADING AND FINE GRADING TO ENSURE EXISTING SUITABLE TOPSOIL IS REMOVED, STOCKPILED AND REINSTALLED INTO ALL PROPOSED LANDSCAPE AREAS PER LANDSCAPE SPECIFICATION SECTION 32 90 00. IN THE EVENT THERE IS NOT ENOUGH EXISTING TOPSOIL, OR NO PLACE TO STOCKPILE TOPSOIL, CONTRACTOR SHALL IMPORT AND INSTALL TOPSOIL PER LANDSCAPE SPECIFICATION SECTION 32 90 00.
- THE CONTRACTOR SHALL BE RESPONSIBLE UNDER THIS CONTRACT FOR REPAIRING OR REPLACING, AT THEIR OWN EXPENSE, SURFACE AND SUBSURFACE SITE FEATURES TO REMAIN, INCLUDING BUT NOT LIMITED TO ANY STRUCTURES, FENCES, WALLS, PAVING SURFACES, PLANT MATERIAL AND/OR TREES DAMAGED OR DESTROYED, BOTH ON THIS PROPERTY OR THOSE PROPERTIES ADJACENT TO THIS SITE. THE DAMAGED ITEM(S) WILL BE RESTORED TO THEIR ORIGINAL CONDITION OR REPLACED TO THE SATISFACTION OF THE OWNER'S REPRESENTATIVE.
- CONTRACTOR SHALL ADJUST EXISTING UTILITY BOXES TO BE FLUSH WITH PROPOSED GRADES.
- REFER TO CONSTRUCTION DETAILS ON SHEETS L3.1 - L3.2
- REFER TO THE FOLLOWING SPECIFICATION SECTIONS:
 - 01 56 39 TEMPORARY TREE AND PLANT PROTECTION
 - 05 52 00 METAL RAILINGS
 - 11 68 16 PLAY STRUCTURES
 - 32 13 13.1 CONCRETE WORK (LANDSCAPE)
 - 32 17 23 13 PAINTED PAVEMENT MARKINGS
 - 32 18 16 SYNTHETIC RESILIENT SURFACING
 - 32 18 16.13 DUAL COMPONENT PLAYGROUND TILE SYSTEM
 - 32 18 16.16 PLAYGROUND PROTECTIVE SURFACING

MATERIAL & DETAIL REFERENCE LEGEND

SYMBOL	DETAIL DESCRIPTION	DETAIL REFERENCE
	CONCRETE PAVING - PEDESTRIAN	A / L3.1
	EXPANSION JOINT	A / L3.1
	TOOLED SCORE JOINT	A / L3.1
	(N) CONCRETE TO (E) CONCRETE	B / L3.1
	UNIT PAVERS	F / L3.1
	CONCRETE SEAT WALL	A / L3.2



1723 Hamilton Ave, Suite 101
San Jose, CA 95125
T. 408.292.2196
anla-associates.com



PROJECT:

VENETIA VALLEY
MIDDLE SCHOOL QUAD RENOVATION

OWNER:

SAN RAFAEL CITY SCHOOLS

177 N San Pedro Rd.
San Rafael, CA 94903

REVISIONS:		
MARK	DATE	DESCRIPTION

DRAWING TITLE:

MATERIAL &
DETAIL
REFERENCE
PLAN

DATE: 01.19.2024
ANLA JOB #: 2351
DRAWN: DN / SL
SCALE: AS NOTED

SHEET NUMBER

L2